

Customer :

customer

Customer part :

customer part

Comment :

Comment

S1=0.15

S2=0.61

Tmax=441

Tp S2=480.0

PI=0.2

HI=103

Sample =10612.4

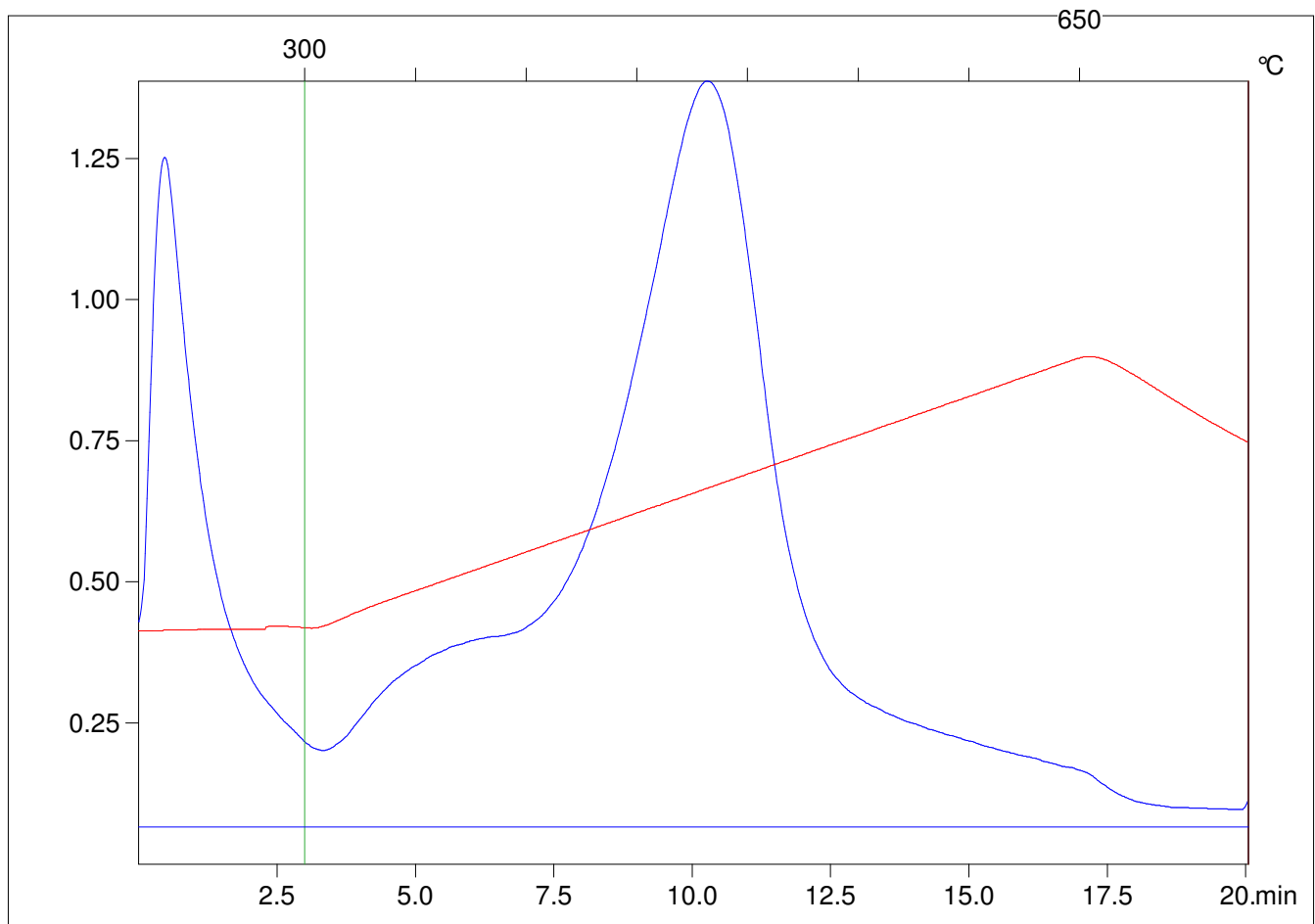
Method =Bulk Rock

Cycle=Basic

KFID(10*9)=1167

Qty =70.3

TOC=0.59



C:\VINC\PK141015\PK082.R00 : FID pyrolysis graphic

State

Pyro Status

Oxi Status